

**RESOLUTION NO 04-79**

**RESOLUTION CREATING  
RURAL SPECIAL IMPROVEMENT DISTRICT # 722M  
KAITLIN COURT SUBDIVISION  
FOR STREET MAINTENANCE**

**WHEREAS**, a Petition signed by more than Sixty Percent (60%) of the Freeholders of the proposed district has been submitted to the Board of County Commissioners for creation of a rural improvement district for road maintenance within Yellowstone County, Montana;

**WHEREAS**, the boundaries of the proposed district are the exterior boundaries of the following described real property: (See Exhibit A); and,

**WHEREAS**, the anticipated cost for the maintenance, and the breakdown of those costs for benefited properties is attached hereto, marked Exhibit "C" and by this reference made a part hereof; and,

**WHEREAS**, the district shall be considered a district to exist perpetually unless included within another district providing the same services or assumed by a municipality; and,

**WHEREAS**, now is the date and time duly notices and published as required by law for the Board of County Commissioners of Yellowstone County to hear and pass all protests that may be made against the making of said maintenance district; and,

**WHEREAS**, 0 protests have been delivered to the County Clerk since the duly published first notice of the passing of the Resolution of Intention; and,

**WHEREAS**, the Board of County Commissioners has acquired the jurisdiction to order the improvements pursuant to Section 7-12-2113, M.C.A.

**NOW, THEREFORE, BE IT HEREBY RESOLVED**, that the Board of County Commissioners of Yellowstone County, Montana, deeming the public interest or convenience require, and having acquired jurisdiction, hereby creates the following Rural Special Improvement District;

**1. NUMBER OF DISTRICT**

Said Rural Special Improvement District shall be designated as District No #722M.

**2. DESCRIPTION OF DISTRICT**

The district is described by the exterior boundaries of the following described property (See Exhibit A.)

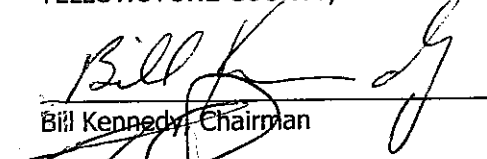
**3. DESCRIPTION OF IMPROVEMENTS, DESCRIPTION OF MAINTENANCE, METHOD OF ASSESSMENT, AND ESTIMATED COSTS** (See Exhibit D)

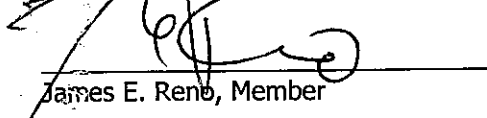
**4. DURATION**

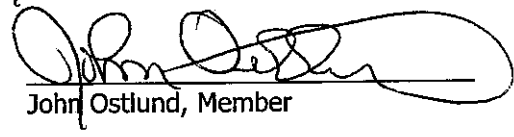
The district shall be deemed to be perpetuated in nature unless absorbed and replaced by another district or municipality.

DONE BY ORDER of the Board of County Commissioners, Yellowstone County, Montana  
this 31<sup>ST</sup>, day of August, 2004

BOARD OF COUNTY COMMISSIONERS  
YELLOWSTONE COUNTY, MONTANA

  
\_\_\_\_\_  
Bill Kennedy, Chairman

  
\_\_\_\_\_  
James E. Reno, Member

  
\_\_\_\_\_  
John Ostlund, Member

(SEAL)  
ATTEST:

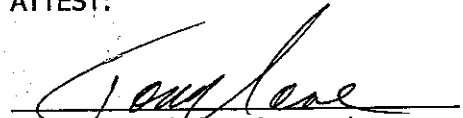
  
\_\_\_\_\_  
Tony Nave, Clerk and Recorder  
Yellowstone County, Montana

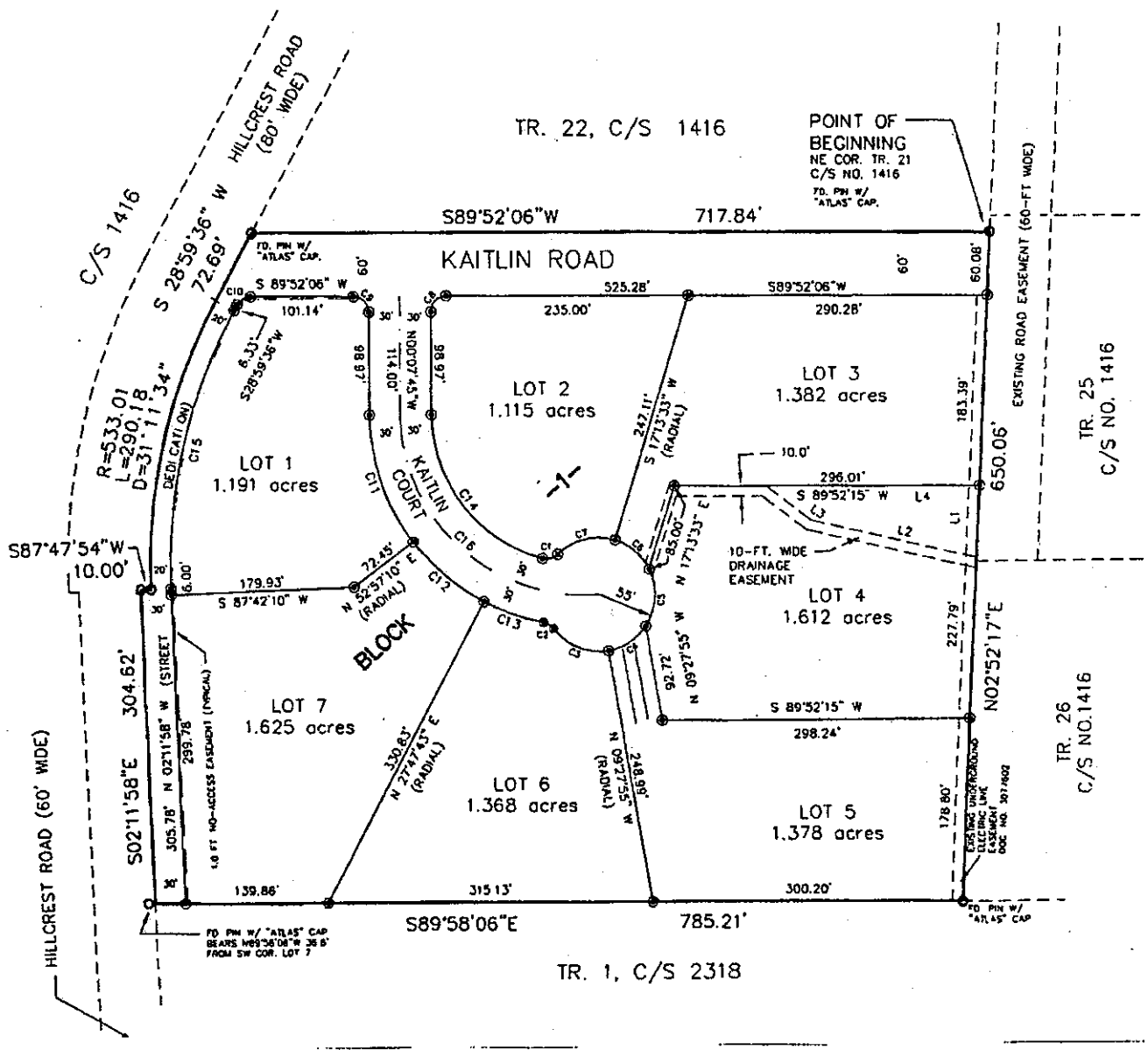
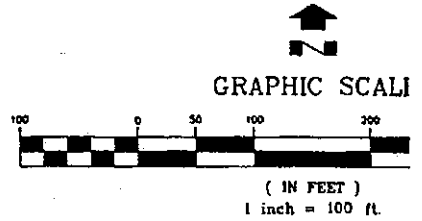


EXHIBIT B

PLAT OF KAITLIN COURT SUBDIVISION

BEING ALL OF TRACT 21, C/S NO. 1416  
 LOCATED IN THE NE1/4 SEC. 6, T.2S., R.26E., P.M.M.,  
 YELLOWSTONE COUNTY, MONTANA

FOR: K. R. WILLIAMS  
 ABSAROOKE, MT.  
 BY: ATLAS ENGINEERS INC  
 BILLINGS, MT.  
 DATE: JUNE, 2004



**EXHIBIT C**

**PETITION TO ESTABLISH A RURAL SPECIAL IMPROVEMENT DISTRICT (RSID)**

**SECTION C  
ESTIMATED ANNUAL MAINTENANCE COST**

**FALL MAINTENANCE:**

ACTIVITY/IMPROVEMENT	ESTIMATED COST
Grading - 4 hours, mobilization - 1 hour	\$ 375.00
	\$

**WINTER MAINTENANCE:**

ACTIVITY/IMPROVEMENT	ESTIMATED COST
	\$
	\$

**SPRING MAINTENANCE:**

ACTIVITY/IMPROVEMENT	ESTIMATED COST
Grading - 4 hours, mobilization - 1 hour	\$ 375.00
	\$

**SUMMER MAINTENANCE:**

ACTIVITY/IMPROVEMENT	ESTIMATED COST
	\$
	\$

**TOTAL ESTIMATED ANNUAL MAINTENANCE COST:** \$ 750.00

